

CUSTOMERS AND PARTNERS
PARTNER FOR PERFORMANCE

ESI brings technological solutions to all major industry sectors ; enabling them to meet their specific industrial challenges of today and tomorrow.



GROUND TRANSPORTATION
Alstom Transport - Bertrand - BMW Group - Fiat Chrysler Group - Ford Motor - General Motors - Gestamp Group - PSA Group - Honda - Hyundai - Mercedes-Benz - Renault-Nissan - Shanghai Automotive Industry Corporation - Tata Group - TRW - Volkswagen Group



HEAVY INDUSTRIES
Alcoa - Arcelor Mittal - Caterpillar - General Electric - Hitachi - John Deere - Whirlpool - Sumimoto



GOVERNMENT AND DEFENSE
CEA - CEE - European Space Agency - Huntington Ingalls Industries - Japan Automobile Research Institute - Ministère de la Recherche RTNL - Naval Group - U.S. Army



ENERGY
EDF - GDF - General Electric - Japan Atomic Energy Agency - Mitsubishi Heavy Industries - Siemens - U.S. Department of Energy



AERONAUTICS AND AEROSPACE
Airbus Group - AECC - AVIC - Boeing - Bombardier - Honeywell - Lockheed Martin - PCC Corporate - Pratt & Whitney - Rolls-Royce - Safran-Snecma - Sikorsky - NASA - UTC Aerospace Systems



ELECTRONICS AND CONSUMER GOODS
Aixtron - Applied Materials - Google - LG - Qualcomm - Samsung - Vedecom



EDUCATION
Arts et Métiers Paritech - Cranfield University - École Centrale Paris - École Polytechnique de Lausanne - École Polytechnique Montréal - Seoul National University - University of Dresden - University of Michigan - University of Technology of Compiègne

ESI, A RESPONSIBLE PLAYER



A committed employer



Serving civil society



An outstanding partner



An environmentally friendly player



FOLLOW US ON SOCIAL MEDIA



Headquarters: 100-102 avenue de Suffren 75015 Paris, France
Tel.: +33 (0) 1 53 65 14 14 - info@esi-group.com - investors@esi-group.com
ESI Group is listed in compartment B of Euronext Paris
ISIN FR0004110310 - ESI Group is eligible for inclusion in FCPI and PEA-PME

G.FC.17.20-A

2016

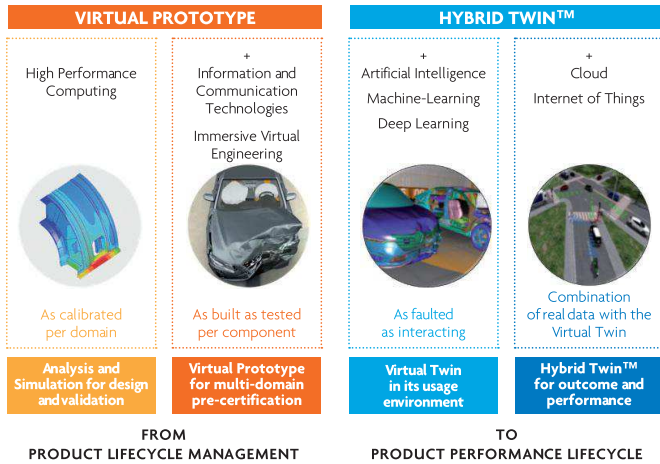
PROFILE



PIONEER AND WORLD-LEADING PROVIDER IN VIRTUAL PROTOTYPING

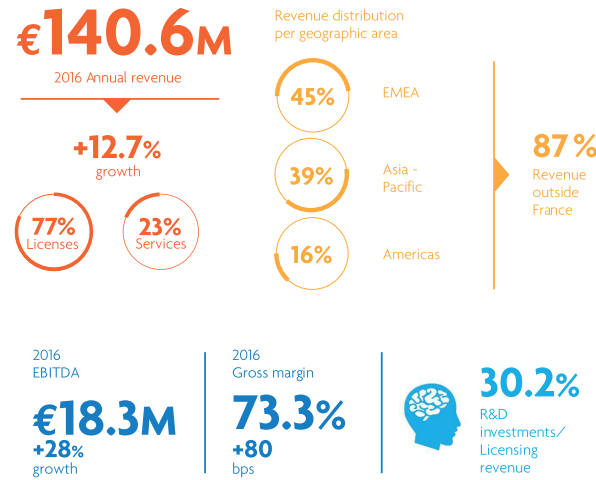
THE GROUP | A DISRUPTIVE INNOVATION THROUGH SMART VIRTUAL PROTOTYPING

Leveraging over 40 years of expertise, ESI helps world leading OEMs and companies meet the challenge of delivering more innovative and smarter products at a lower cost, faster, and with increased reliability, making sure they will pass the precertification tests. Today, the growing possibilities offered by the Internet of Things (IoT) and Big Data enable a product's lifecycle to be monitored after commissioning. ESI's disruptive approach, particularly in the context of today's "outcome" economy, essentially answers to the key economic challenges of the Industry of the Future.



2016 KEY FIGURES | A UNIQUE POSITION IN A GROWING MARKET

ESI's transformative approach, entitled Product Performance Lifecycle™ (PPL), together with its IoT based Hybrid Twin™ solution, represent a strongly innovative and inescapable step forward that aims to provide businesses with intelligent control over a product's entire lifecycle; anticipating performance and intelligently managing maintenance.



IN THE WORLD | A GLOBAL COMPANY

ESI's solutions are commercialized in more than 40 countries through its international subsidiaries and its distribution network. This worldwide presence allows the Group to work closely with its customers and stay abreast with their continuously evolving business and technological needs.



2016 HIGHLIGHTS

Acquisition of Mineset Inc. (February 2016)
Mineset is a Big Data visual analytics and machine-learning specialist that has developed a visual analytics platform which integrates advanced visualization with machine-learning technology.

Partnership with PARC (December 2016)
Signature of a long-term strategic partnership agreement with PARC which focuses on expanding and industrializing their advanced research project on Fault Augmented Model Extension (FAME).

Renewals of strategic major contracts (2016)
Three-year agreement with Volkswagen Group renewed with an expanded perimeter for the ninth consecutive time; renewal of Renault-Nissan's three-year joined contract for the second time; enhanced collaboration with in the frame of the agreement with Honda.

Attendance at the CES (January 2017)
ESI Group attended the Consumer Electronic Show® in Las Vegas and presented ESIPro-SMVC™, its recently acquired solution enabling the virtual testing of the sensors and serving the various onboard perception systems of vehicles and aircraft.

Transfer to compartment B (January 2017)
Transfer of ESI shares from compartment C to compartment B of Euronext Paris. Compartment B includes listed companies with a market capitalization between 150 million and 1 billion euros.

Acquisition of Scilab Enterprises (February 2017)
Scilab Enterprises is the publisher of the open-source software Scilab that provides a powerful environment for engineering, computation and scientific applications. Scilab Enterprises also offers a collaborative inter-connectable platform available in "Platform as a Service" (PaaS) mode.